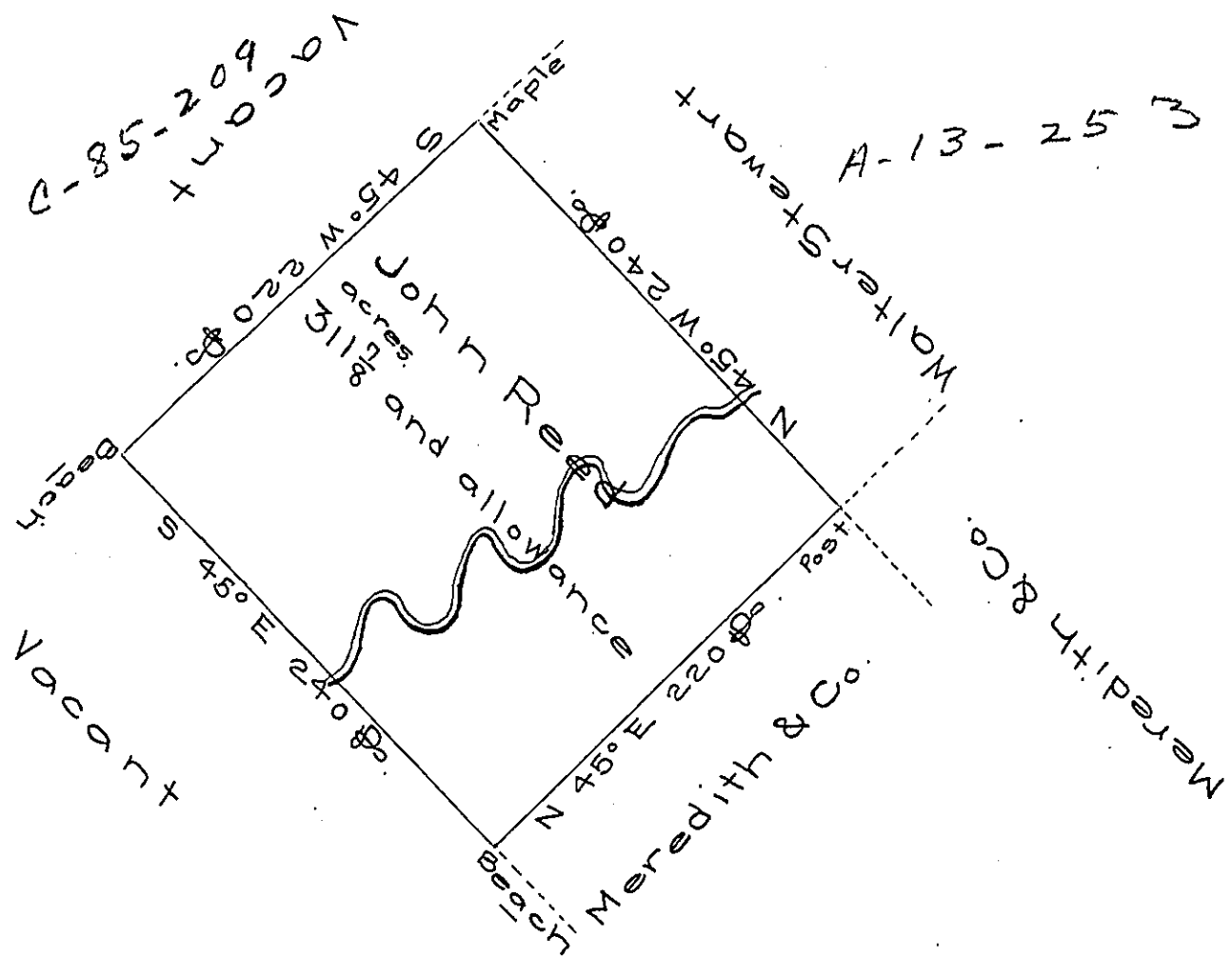


B-272

George Fullerton



A draught of a tract of land called — situate on the waters of Tunkhannock Creek and adjoining land surveyed for George Fullerton and others in the County of Northumberland containing three hundred and eleven acres and one hundred and forty perches besides the usual allowance of six per cent for roads &c surveyed the third day of October 1774 for John Reed in pursuance of a warrant dated the 19th day of August 1774 by

Chas Stewart Dep. Sur.

To John Lukens Esq.
Surv. Genl.

IN TESTIMONY that the above is a copy of the original remaining on file in the Department of Internal Affairs of Pennsylvania, made conformably to an Act of Assembly approved the 16th day of February, 1833, I have hereunto set my Hand and caused the Seal of said Department to be affixed at Harrisburg, this fourteenth day of September 1906.

Asa D. [Signature]
Secretary of Internal Affairs